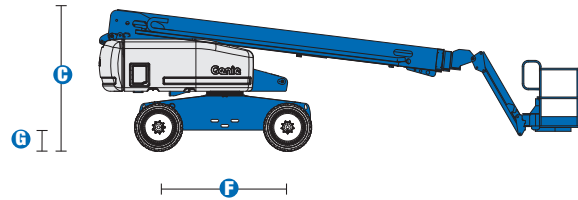
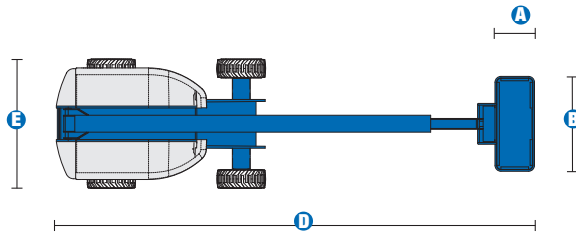
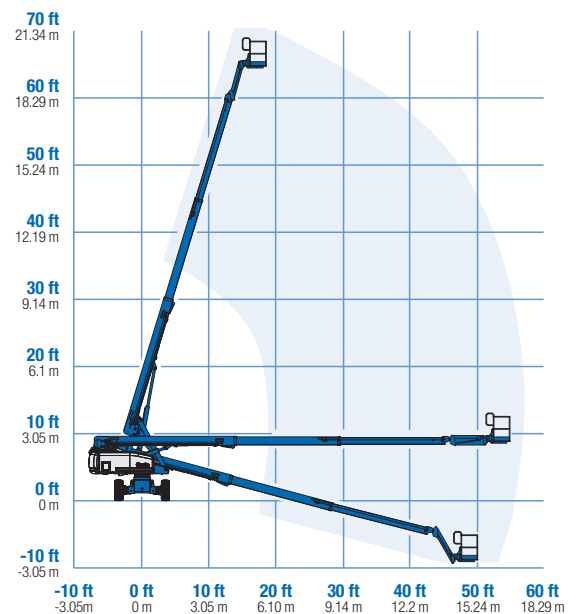


# Specifications



MODEL		S™-65	
MEASUREMENTS		Metric	US
Working height maximum*		21.80 m	71 ft
Platform height maximum		19.80 m	65 ft
Horizontal reach maximum		17.10 m	56 ft 2 in
Below ground reach		2.72 m	8 ft 11 in
A Platform length		0.91 m	3 ft
B Platform width		2.44 m	8 ft
C Height - stowed		2.72 m	8 ft 11 in
D Length - stowed		9.50 m	31 ft 2 in
Length - transport (jib tucked under)		7.60 m	25 ft
E Width		2.49 m	8 ft 2 in
F Wheelbase		2.50 m	8 ft 2.5 in
G Ground clearance - center		0.37 m	1 ft 2.5 in
PRODUCTIVITY			
Lift capacity		227 kg	500 lbs
Platform rotation		160°	160°
Vertical jib rotation		135°	135°
Turntable rotation		360° continuous	
Turntable tailswing		1.22 m	4 ft
Drive speed - 4WD stowed		4.8 km/h	3.0 mph
Drive speed - raised or extended		1.1 km/h	0.68 mph
Gradeability - 4WD - stowed**		45%	45%
Turning radius - inside		2.36 m	7 ft 9 in
Turning radius - outside		5.72 m	18 ft 9 in
Controls		12 V DC proportional	
Tyres - RT lug - Foam filled		355/55D 625	
POWER			
Power source		Deutz D2011L03i 3 cylinder diesel 46 hp (34.3 kW)	
Auxiliary power unit		12V DC	12V DC
Hydraulic tank capacity		170 L	45 gal
Fuel tank capacity		132 L	35 gal
WEIGHT***			
		10,349 kg	22,815 lbs

## RANGE OF MOTION S™-65



**STANDARDS COMPLIANCE** ANSI A92.5, CSA B354.4, CE Compliance, AS 1418.10

\* The metric equivalent of working height adds 2 m to platform height. U.S. adds 6 ft to platform height.  
 \*\* Gradeability applies to driving on slopes, see operator's manual for details regarding slope ratings.  
 \*\*\* Weight will vary depending on options and/or country standards.

# Features

## STANDARD FEATURES

### MEASUREMENTS

- 21.80 m (71 ft) working height
- 17.10 m (56 ft 2 in) horizontal reach
- Up to 227 kg (500 lb) lift capacity

### PRODUCTIVITY

- 2.44 m (8 ft) steel platform
- 1.52 m (5 ft) jib boom with 135° working range
- 4WD
- Full-time active oscillating axle
- Rough terrain foam-filled tyres
- Self-leveling platform
- Hydraulic platform rotation
- Fully proportional Hall effect joystick controls
- Drive enable
- Tilt alarm
- Motion alarm
- Descent alarm
- Hour meter
- Horn
- 360° continuous turntable rotation
- Positive traction drive
- Two speed wheel motors
- Engine gauge package
- Thumb rocker steer
- Dual flashing beacons

### POWER

- 12 V DC auxiliary power
- Deutz diesel 34.3 kW (46 hp)
- Anti-restart engine protection
- Auto engine fault shutdown
- Swing out engine tray
- Deutz intake air heater

## OPTIONS & ACCESSORIES

### PRODUCTIVITY

- Platform swing gate
- Half-mesh platform inserts with swing gate
- Platform top auxiliary rail
- Air line to platform
- Hydraulic oil cooler
- Fire resistant hydraulic oil
- Biodegradable hydraulic oil
- Basic hostile environment kit
- Deluxe hostile environment kit
- Deluxe aircraft protection package (6 ft platform)
- Tool tray
- Fluorescent tube caddy
- Platform work lights
- Front driving lights
- Lockable platform control box covers
- Second battery
- Tow package
- 1.83 m (6 ft) steel platform
- Rough terrain non-marking tyres (foam-filled)

### POWER OPTIONS

- 240 V power to platform
- 7 kVA hydraulic generator (240 V/50 Hz)
- Cold Weather Packages
- Arctic Packages
- Diesel scrubber/spark arrestor muffler
- Retained key selector switch



## Genie Australia – Toll free number 1800 788 633

**Brisbane (Head Office)**  
33 Kimberley Street  
Darra QLD 4076

**Sydney**  
74 Glendenning Road  
Glendenning NSW 2761

**Melbourne**  
374 Hammond Road  
Dandenong VIC 3175

**Perth**  
83 Bannister Road  
Canning Vale WA 6155

## Genie United States

## Distributed by:

18340 NE 76th Street  
P.O. Box 97030  
Redmond, Washington  
98073-9730